

Arnhem Business School - The Netherlands

Fact Sheet 2019 - 2020



Exchange programme (Semester / full academic year)

Undergraduate Courses (modules) taught in English

Full descriptions in the Student Handbook on our website:
www.han.nl/abs-exchange

Recommended language requirements

B2, IELTS: at least 6.5 or TOEFL: 79-93 (internet based)
or 232 Computer based

Nomination and application procedure

Nomination procedure

Nomination form: <https://goo.gl/forms/60WEed7GJKN9BfA03>
or send an email to : Incomingexchange.ABS@han.nl

Nomination deadline

Fall semester (September - January)

Non-EU students: 15 April

EU students: 1 May

Spring semester (February - July)

Non-EU students: 15 September

EU students: 1 October

Application deadline

Fall semester (September - January)

Non-EU students: 1 May

EU students: 25 May

Spring semester (February - July)

Non-EU students: 1 October

EU students: 25 October

Application procedure

Students will receive a link to the online application form once they have been nominated.

Documents to be uploaded with their online application

- > Color photograph
- > Copy of valid passport or ID document
- > Copy of proof of health insurance
- > Official transcript of records
- > Module Preference Form/learning agreement

Re-sit / long distance exams

Incoming Exchange students

We do not facilitate long distance exams offered by the students' home university at HAN/Arnhem Business School or re-sit exams offered by HAN/Arnhem Business School once the students have returned to their home university.

Outgoing Exchange students

The Board of Examiners at HAN/Arnhem Business School does not permit students, who have studied at a partner university, to write long distance exams offered by the partner university once they have returned to HAN. In certain exceptional cases, the possibility to write such an exam may be discussed.

Academic Calendar



Fall semester

Arrival: from 15 August 2019
(general arrival day: 23 August)
Orientation: 26 - 30 August 2019
Lectures start: 2 September 2019
End of semester: 27 January 2020



Spring semester

Arrival: from 29 January 2020
(general arrival day)
Orientation: 30 - 31 January 2020
Lectures start: 3 February 2020
End of semester: 10 July 2020

www.han.nl/academiccalendar

Summer / Winter courses (3 weeks)

- > **European Culture, Business and Entrepreneurship** (summer & winter sessions)
- > **Supply Chain Management** (summer session only)

Session dates

Summer Courses: 23 June - 12 July 2019 / 21 June - 10 July 2020

Winter Course: 5- 24 January 2020

Nomination procedure

- > Nomination form Summer Courses:
<https://goo.gl/forms/oAfyl8GDrlu3nsqP2>
- > Nomination form Winter Course:
<https://goo.gl/forms/sUXLUUk2nsqGlgBw2>
or send an email to Incomingexchange.ABS@han.nl

Deadline for nomination

Summer Courses: 1 April

Winter Course: 1 October

Deadline for application

Summer Courses: 15 April

Winter Course: 25 October

Application procedure

Students will receive a link to the online application form once they have been nominated.

Documents to be uploaded

- > Color photograph
- > Copy of valid passport or ID document

Course fee

- > € 1500,- (tuition waiver, 3 summer course students = 1 semester exchange place)
- > € 2500,- (including tuition)

www.han.nl/abs-shortcourse

Additional information

Accommodation

HAN/Arnhem Business School facilitates furnished, off-campus accommodation for its exchange students: www.han.nl/hanhousingoffice

Application for accommodation: students may indicate on the online Exchange Application Form whether they wish to apply for university facilitated accommodation.

Immigration formalities

More information: www.han.nl/visa

Arrival information

Students are met at Arnhem Central Station and taken to their accommodation on the general arrival day only.

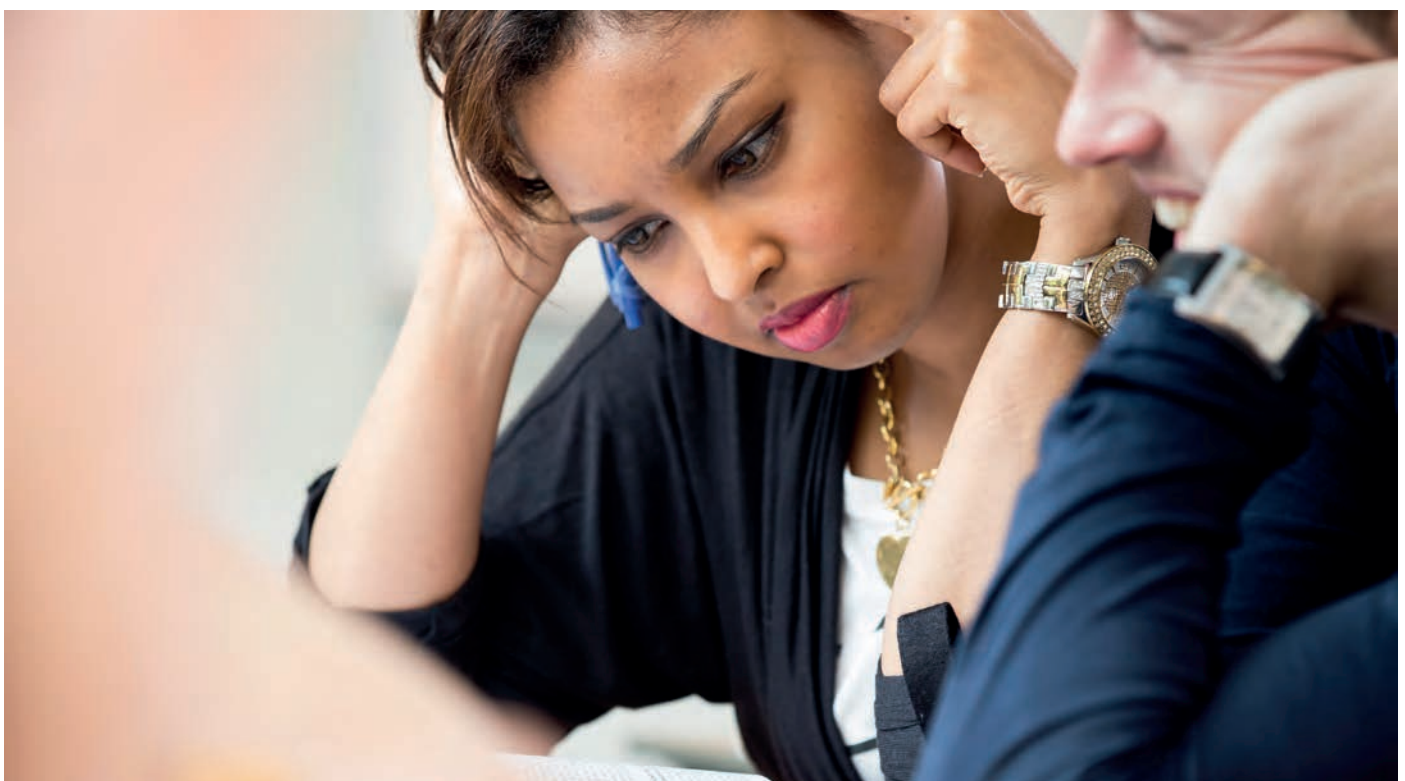
Other practical information

www.han.nl/studyathan

Grading scale

ABS grades versus ECTS grades		Definition
8.0 – 10	A	Excellent
7.0 – 7.9	B	Very good
6.4 – 6.9	C	Good
5.8 – 6.3	D	Satisfactory
5.5 – 5.7	E	Pass
4.0 – 5.4	FX	Fail
< 4.0	F	Fail

The majority of students obtains grades between 6 and 8. Grades 1-3 and 9-10 are hardly ever awarded. For more information about the Dutch grading system, please check www.studyinholland.nl



General Information

Han University Of Applied Sciences
Arnhem Business School
Ruitenberglaan 31
6826 CC Arnhem
The Netherlands
☎ +31 26 369 1331

Erasmus Code

NLArnhem 27

Website

🌐 www.han.nl/English

Website for exchange students

🌐 www.han.nl/abs-exchange

Business School Contacts

International Relations Office

✉ Internationalrelations.fem@han.nl

Policy Advisors, International Relations

Ms. Erna Helsen
☎ +31 26 369 1267
✉ e.helsen@han.nl

Ms. Judith van de Looij
☎ +31 26 369 1267
✉ judith.vandelooij@han.nl

Contact for Incoming Exchange students

Ms. Ingrid Le Coultre
☎ +31 26 369 1331
✉ ingrid.lecoultre@han.nl
✉ incomingexchange.abs@han.nl

Acceptance Letters

Incoming Exchange students will receive an official acceptance letter by email only.

Transcript of records

Incoming Exchange students: Transcripts of records will be sent to the partner university by email only (unless the original is requested) within a maximum of 6 weeks after the end of the semester;

Outgoing Exchange Students: We request our partner universities to send all transcripts of records to our international relations office:

✉ internationalrelations.fem@han.nl

Postal Address:

Han University Of Applied Sciences
Arnhem Business School
International Relations Office
Ruitenberglaan 31
6826 CC Arnhem
The Netherlands

Academic Coordinator Exchange Programme

Ms. Jolande Van Schadewijk
✉ jolande.vanschadewijk@han.nl

Contacts For Agreements / Nomination outgoing students

Ms. Marjolein Janssen (Erasmus+)
☎ +31 26 369 1331
✉ marjolein.janssen@han.nl

Ms. Humera Saeed (non-EU)

☎ +31 26 369 1267
✉ humera.saeed@han.nl

Han International Office

Campus Wide: applications for outgoing students, general matters

✉ internationaloffice@han.nl

Immigration (visa and residence permit applications)

✉ immigration@han.nl